



INCLUDED INSIDE

- Safety Rules
- Parts Check Lists and Photos
- Cable Diagrams for Various Crane Configurations
- Step by Step Instructions
- Tips for Packaging and Storage

WATCH THE INSTRUCTIONAL VIDEO

A companion video is available at
<http://www.ezfx.com/ez-crane-set-up-video/>
(scan QR code for quick link)

We suggest that you watch it as a
supplement to this manual.



SAFETY RULES

Always think safety first when working with the EZ Crane and EZ Jib. Below are some fundamental rules to abide by when operating the EZ Crane.

- Understand and follow the set up instructions provided in this user manual. Allow yourself sufficient time to learn the process. Practice the set up before using the EZ Crane for the first time. Include any personnel that will be using the EZ Crane and make sure that they understand how to use it safely.
- Always mount the EZ Crane to a heavy duty support and dolly wheel system. We recommend the EZ FX Pedestal.
- Understand that the EZ Crane works like a see saw, using weights on one end to counter balance the weight of the camera on the other. With that in mind, understand that adding or removing weight from either side creates an imbalance. Follow the following procedure to avoid unintentional raising or lowering of the Crane.

PROCEDURE: Always secure the camera end down to a solid surface before you remove any counter weights. We recommend a C Stand support. Inversely, don't remove the camera until you have secured it and removed the counter weights first.

- Be aware of pinch points on the EZ Crane and avoid placing items such as cables or body parts in an area where moving parts can cause damage or harm someone.
- Do not move (roll) the support system (with EZ Crane Mounted) from one position to another while the camera and counter weights are attached. Always remove the camera and only keep sufficient counterweights needed to balance the crane before moving.

Also, never move the system alone. Have spotters on both ends of the Crane.

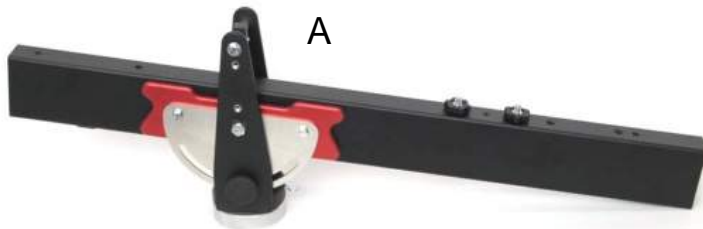
When rolling the support system. Never push from a high spot. To avoid tipping, always pull (preferably) or push from a low spot near the wheel base.

- Be aware of your surroundings. When choosing a location for placement, consider obstructions & wiring & environmental situations that will effect safety and your performance.
- Never swing or position the Crane in a manner that would risk contact with people or objects. Know your boundaries before you begin.
- Weather in a public or private environment, always respect other peoples space and practice professional etiquette.
- Be aware that understanding the disassembly of the EZ Crane is just as important as understanding the assembly process. Remove the camera safely as described above and always pack the components away as instructed in this manual so that you have all the parts you need to operate efficiently and safely.
- If you need any clarification on safety, contact us at 407-877-2335 or www.ezfx.com

PART NAMES and CHECK LIST

- A - Center Beam
- B - Camera End Beam
- C - Tail Beam
- D - Crane Beams (5)
- E - Turnbuckle Bracket
- F - V Pole Base

- G - Cable Poles (Black)
- H - Cable Poles Cross Bar (Red)
- I - Parallel Beams (5 long, 1 short)
- J - Cables (2 Red, 2 White, 4 Black)
- K - Counterweight Bar



A

G & H



B



I



C



D



E



J

F



K



PART NAMES and CHECK LIST (PADDED ACCESSORY BAG)

- A - Camera Mount Plate
- B - Cable Hitch Connectors (2)
- C - Swing Arms (2)



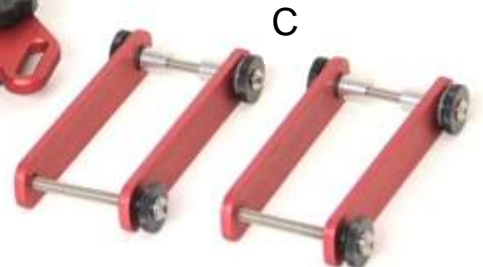
A



B



C

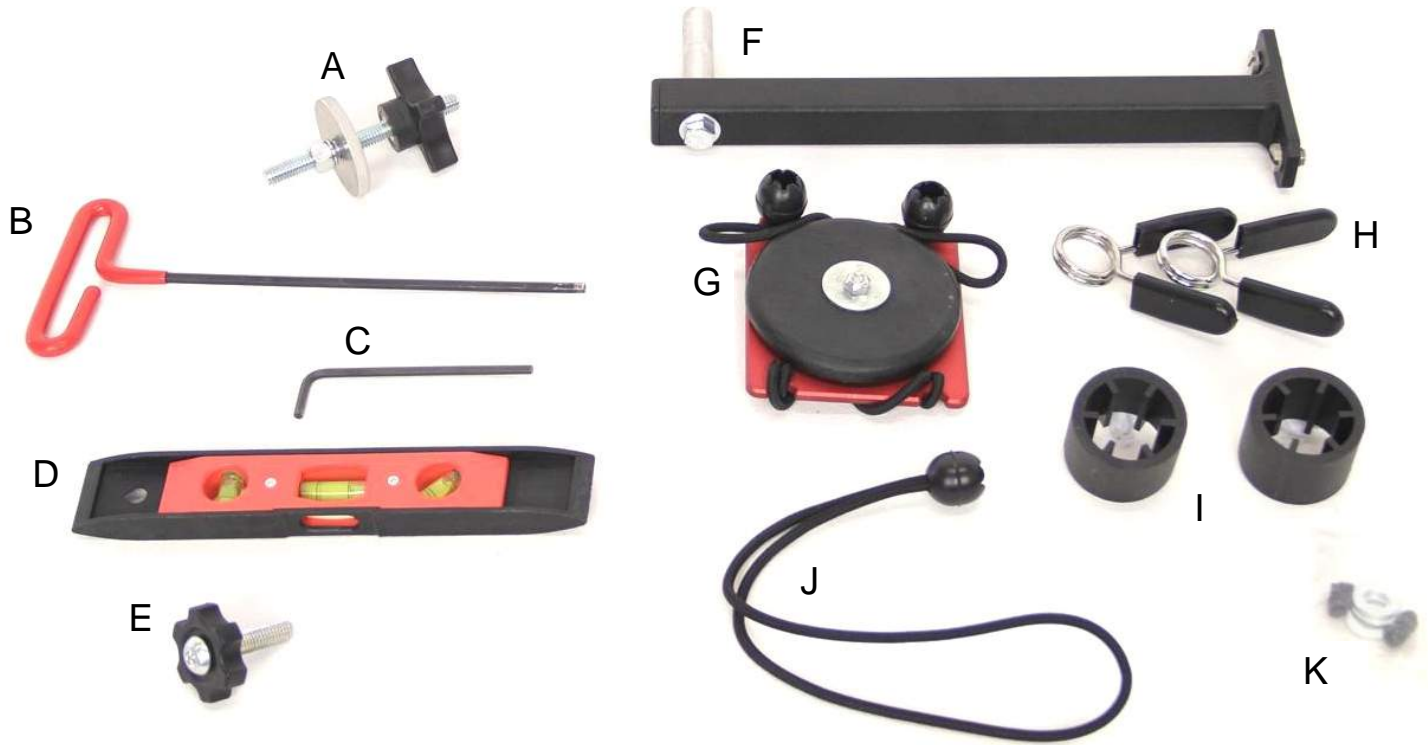


CANVAS TOOL BAG CHECK LIST



- A - Crane Mounting Hardware
(Shaft, Knob, Washer)
- B - T Handle Hex tool
- C - Spare Hex Tool
- D - Level
- E - Remote Head mounting knob

- F - Monitor T-bar
- G - Sliding Counterweight
- H - Weight clips (2)
- I - Olympic spacers (2)
- J - Bungee cords Tie Downs (8)
- K - Spare Hardware



CARRY BAG INVENTORY



BAG A:

- Counterweight Bar
- Center Beam
- Camera End Beam
- V Pole Base
- All Cables
- Padded Accessory Bag
- Canvas Tool Bag

BAG B:

- 3 Crane Beams
- Cable Pole Assembly
(Cable Poles and Cross Bar)
- 3 Parallel Beams

BAG C:

- 2 Crane Beams
- 1 Tail Beam
- Turnbuckle Bracket
- 3 Parallel Beams (2 long, 1 Short)

SET UP INSTRUCTIONS



A companion video is available at <http://www.ezfx.com/ez-crane-set-up-video/>
(scan QR code for quick link)



1. Set up the Support System and put it in place. We recommend the EZ FX Pedestal. See Pedestal set up Instructions.



2. Open the largest bag and set aside the accessory bags inside. Remove the V Pole base from its storage position.

NOTE: Remember this storage position for re packing.



3. Find the mounting hardware (shaft, knob and washer) in the canvas tool bag. Screw the short end of the shaft into the swivel base of the EZ Crane.



4. Set the Center Beam onto the Pedestal or support system and secure it down with the washer and knob.

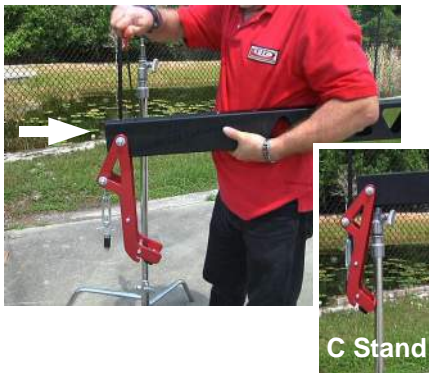


5. Use the Hex tool provided to loosen the expansion set screws and remove the Camera End Beam. Set it aside to be attached to the end of the Crane later.



6. Find the Crane Beams in the bag and build the Crane in sections. Slide the open end over the exposed expansion joint. Use the hex tool to expand the joint and form a secure connection.

Repeat the process to build the crane to the desired length.



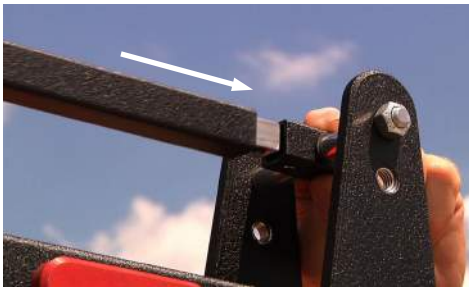
7. Attach the Camera End Beam to the final section of Crane Beams. Use the hole at the underside of the End Beam to set the Crane on to a C-Stand for continuing set up.



8. Find the Tail Beam and attach it to the opposite end of the Crane. NOTE: The Tail Beam has double expansion set screws so be sure to expand all 4 set screws.



9. Attach the V Pole Base to the Center Beam.



10. Attach the Parallel Beams. Start with the short beam. Insert the male end into the female connector at the Center of the Crane. Use the hex tool to tighten the internal set screw unit the tip protrudes through the capture hole on the underside.



11. As you attach Parallel beams, use the swing arms to support the Beams. Space them differently depending on the length you are building the Crane.

NOTE: For the full 5 sections, place the arms on 2nd and 4th beams.



12. Use the same beam connecting technique to connect the last parallel beam to the Camera End Beam.



13. Attach the camera mounting plate to the gooseneck. Slide the plate and align the notches to center the hole. Secure it with the provided knob.



14. Level the camera plate by expanding or contracting the turnbuckle at the end of the parallel beam.

NOTE: Re check the level after the camera is mounted.



15. Slide both cable poles (L/R) on to the V-pole base. NOTE: Be sure that the cable rollers are facing to the outside of the V Shape.



16. Connect both sides of the red VPole Cross Bar to the cable poles using the included knobs.



17. Attach the Turnbuckle Bracket to the Tail Beam utilizing the knobs on the end of the tail beam (storage position)

NOTE the position of the bracket's red brace over the counter weight hole on the end of the beam.



18. Prepare for cabling. Depending on how long you build the Crane, you may or may not need cables.

Use the cable configuration chart enclosed in this manual (following the set up steps) to determine what cable configurations you will need. (larger photo)



19. Attach cable hitches to the Crane Beams.

NOTE: The cable diagram will also indicate the placement of cable hitches on to the crane



20. Starting with the longest cable (red) cables, clip the carabineer ends to the cable hitches.



21. Attach the turnbuckle ends to the wide (outside) hitches on the turnbuckle bracket.



22. Pull the cable up to the top cable roller on the cable pole and lay the cable into the roller track. Do this to both the right and left sides.



23. If needed, repeat the process with the medium length white cable. This time attach the turnbuckle end to the narrow inside hitches on the turnbuckle bracket.



24. Lay the medium length (white) cable over the side rollers on the cable poles. Do both the right and left sides.



25. Insert the counter weight bar into the mounting hole on the tail arm. Use the hex tool to push the internal set screw and secure the bar in place.



26. Install the sliding counter balancing weight on to the Tail Beam. Slide it up or down the beam to micro balance the EZ Crane.



27. OPTIONAL: Included in your kit is a set of counterweight adapters. They allow you to place a large hole (Olympic style) counterweight on to the Crane if you choose to.



28. Add the counterweights needed to pre-balance the Crane.
NOTE: For alignment, we recommend to first balance the crane before adding the camera. See next step.



29. Align the suspension of the Crane using the turnbuckle system. The large master turnbuckle will pull all cables simultaneously while the smaller turnbuckles give you control over left/right alignment. You may need to tweak the alignment later after the camera is added but it is easier to this before hand.



30. Mount your remote pan/tilt head and camera to the end of the Crane. Use the mounting knob provide in the tool bag.



31. Add the Monitor mount bracket to the center post of the Crane. You have the option of placing it on the right or left side of the Crane, depending on your preference.



32. Attach the cables for pan, tilt, zoom, focus, monitoring, etc. and dress them on to the underside of the Crane using the bungee ball tie downs provided in the canvas tool bag.



33. Add additional counterweights to compensate for the camera weight. Remember to include joysticks and zoom controls as part of the counter balancing. Micro balance with the sliding counterweight.

THINK SAFETY FIRST

- Understand that the EZ Crane works like balancing a scale, using weights on one end to counter balance the weight of the camera on the other. With that in mind, understand that adding or removing weight from either side creates an imbalance. Follow the procedure to avoid unintentional raising or lowering of the Crane.
PROCEDURE: Always secure the camera end down to a solid surface before you remove any counter weights. We recommend a C Stand support. Inversely, don't remove the camera until you have secured it and removed the counter weights first.
- Be aware that understanding the disassembly of the EZ Crane is just as important as understanding the assembly process. Remove the camera safely as described above and always pack the components away as instructed in this manual so that you have all the parts you need to operate efficiently and safely.
- Review ALL safety rules on page 2 of this manual.

CABLE CONFIGURATION CHART

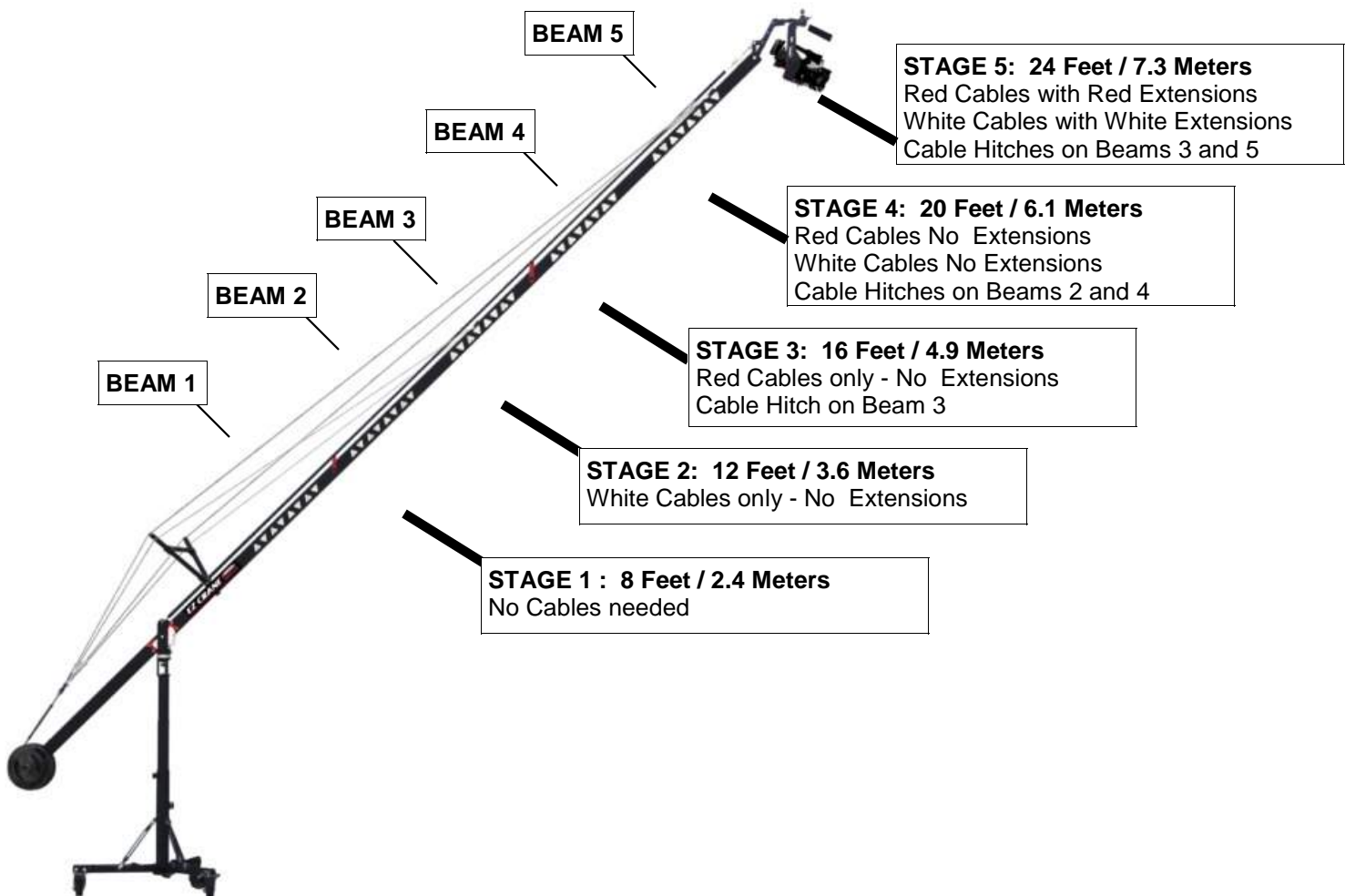
Suspension cables are needed to align the crane. Below is a photo of all the cables provided with each EZ Crane package. At the bottom of the page is diagram showing the different configurations of cables you will need depending on how long you build the EZ Crane.



2 Long Cables
Tagged Red

2 Med Cables
Tagged White

4 Short Extenders
2 Red & 2 White



TIPS FOR PACKING AND STORAGE



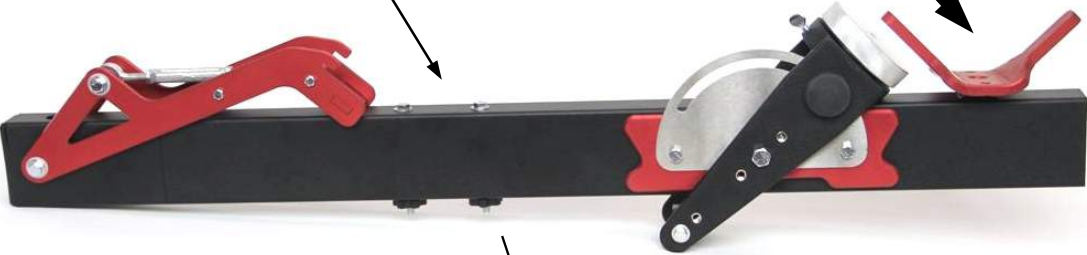
Place the Camera End Beam on to the Center Beam.

Flip the assembly upside down to place it in the padded bag.



On the underside of the Center Beam is a place for mounting the V Pole Base.

Screw it here temporarily to secure it during transport.



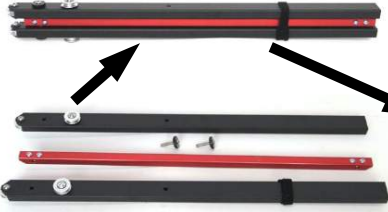
Place the Counterweight Bar into the bottom of the bag first, before placing other components on top of it.



Use the 5 compartments in the large bag to store the cables.
 2 for Red Cables
 2 for White Cables
 1 for the 4 Short Extender Cables



Sandwich the red Cross Bar between the 2 black Cable Poles and use the screw knobs to secure them together.



Place the assembly in the cavity of one of the Crane Beams.



Fold the Turnbuckle Bracket and place the assembly in the cavity of one of the Crane Beams.



EZ FX POLICY & PROCEDURES

ON SAFETY AND LIABILITY

Safety tips are included in this User Manual along with instructions on how to set up the product. EZ FX, Inc. is not responsible for bodily injury or equipment damages due to operator error, set up error or violations of safety rules and precautions. Using our products requires a complete understanding of the safety guidelines. If any part of the guidelines are unclear, contact us and we can provide clarification.

Contact us at **1-800-541-5706** or **407-877-2335** or **www.ezfx.com**

ON NET 30 PAYMENTS

EZ FX, Inc. reserves the right to charge a 2% per month service charge on amounts not paid within 30 days of the invoice date. This is an annual rate of 18%. In addition, the customer will be responsible for any collection fees or legal expenses incurred by EZ FX, Inc. while attempting to collect payment. If a credit card was used to secure the net 30 terms, then EZ FX, Inc. reserves the right to charge the entire amount plus the late and collection fees to the card.

ON CREDIT CARD PAYMENTS

EZ FX, Inc. reserves the right to authorize the card before the product is shipped.

If the card is declined then EZ FX, Inc. is not obligated to ship out the products until a valid card is obtained.

ON DAMAGED SHIPMENTS

All claims due to carrier mishandling must be filed with the carrier and should be notified to the EZ FX, Inc. within 5 days of delivery. EZ FX, Inc. is not responsible for production losses, due to damaged or late deliveries.

ON RETURNS

EZ FX, Inc. offers a 30 day Satisfaction Guarantee. This provides the customer with a 30 day period from the date of purchase to determine if the product meets their satisfaction. No returns will be accepted without a return authorization number. A return authorization number can be obtained by calling 800-541-5706. Upon review, if EZ FX, Inc. provide solutions to meet that satisfaction then

a RA number will be assigned. EZ FX, Inc. requires all returns to be packed carefully with bubble wrap as when it was received and returned in the original box. If the original box is lost or in an unusable condition then EZ FX can provide a new box. All shipments from the customer to EZ FX, Inc. must be insured with the carrier for the purchase value of the contents. All products must be returned in re-sellable condition to receive a full purchase price refund. EZ FX, Inc. reserves the right to inspect the product upon its return and deduct a restocking fee based upon a fair price to re-condition the products. Shipping charges do not apply to returns.